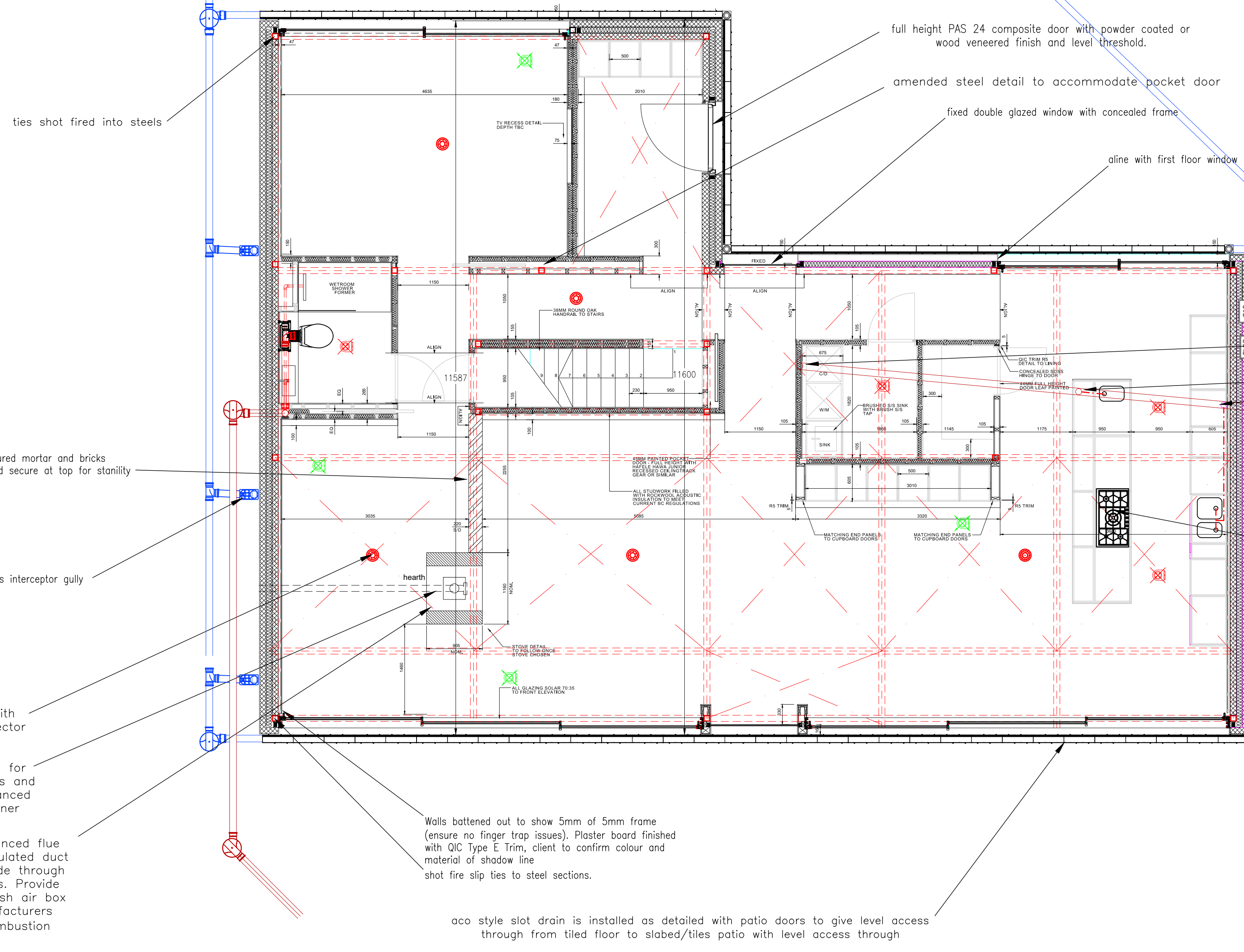


Figure 10 consists of two cross-sectional diagrams. The left diagram shows a wall with a circular opening. A label 'mineral fibre (optional)' points to a layer of insulation within the wall. The right diagram shows a floor slab with a circular opening. A label 'rigid sheeting to mask opening' points to a horizontal layer above the opening. Another label 'rc lintel over' points to a vertical reinforcement element above the opening. The diagrams illustrate the construction details for the wall and floor around the circular opening.



100mm dia. pvc-u svp's to 100dia below ground drainage (minimum gradient 1: 80) to new i.c's with FACTA Class A cover in pedestrian areas only. All to existing mains sewerage via new chamber in drive and Facta B (EN124 Class B125).

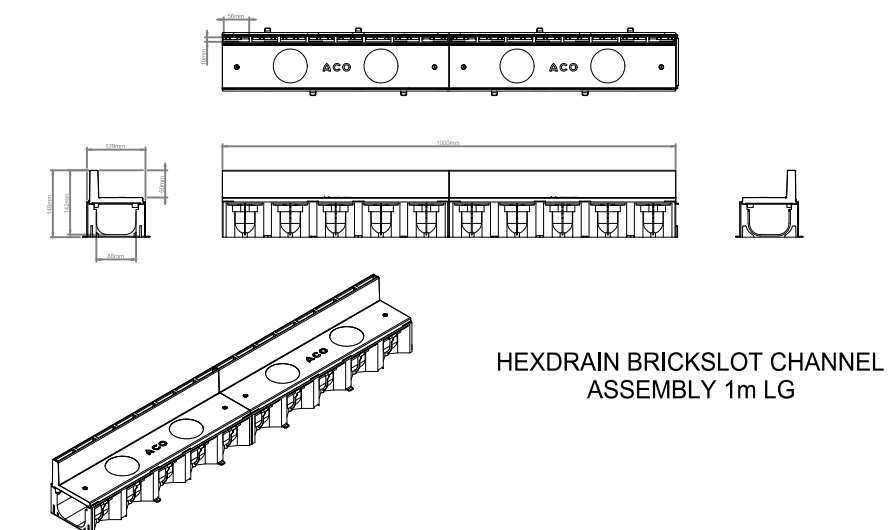
100 x 75 ALUMASC Flushjoint rectangular powder coated aluminium downpipe white or RAL 9006 to match door and window frames via new trapped leaf/debris interceptorgullies to soakaway.

Surface water runoff generated from the roof mass is to be disposed using a 7m x 2m x 1m deep geocellular crate soakaway dwelling for all storm events up to and including the 1 in 100 year event plus 40% allowance for climate change.

Backfill around the sides of the encapsulated units, forming a 100mm thick layer of coarse sand or Class 6H selected granular material immediately adjacent to the units as appropriate. Where required, remaining excavated areas around these units should be backfilled with Class 6H selected granular material (with 100% passing the 5mm sieve), in accordance with MCHW, Volume 1, Series 600.

- mechanical extract ducted below floor to external

aco style slot drain is installed as detailed with patio doors to give level access through from tiled floor to slabed/tiles patio with level access through

[illegible]

New Build & Commercial Architect
PSK CHELTENHAM LIMITED, Unit B4, Staverton Connection
Gloucester Road, Cheltenham, GL51 0TF
Tel: 01452 714 596 www.psk-architect.co.uk

DRAWING NO.	
-------------	--

~~CF20 DAF 04~~