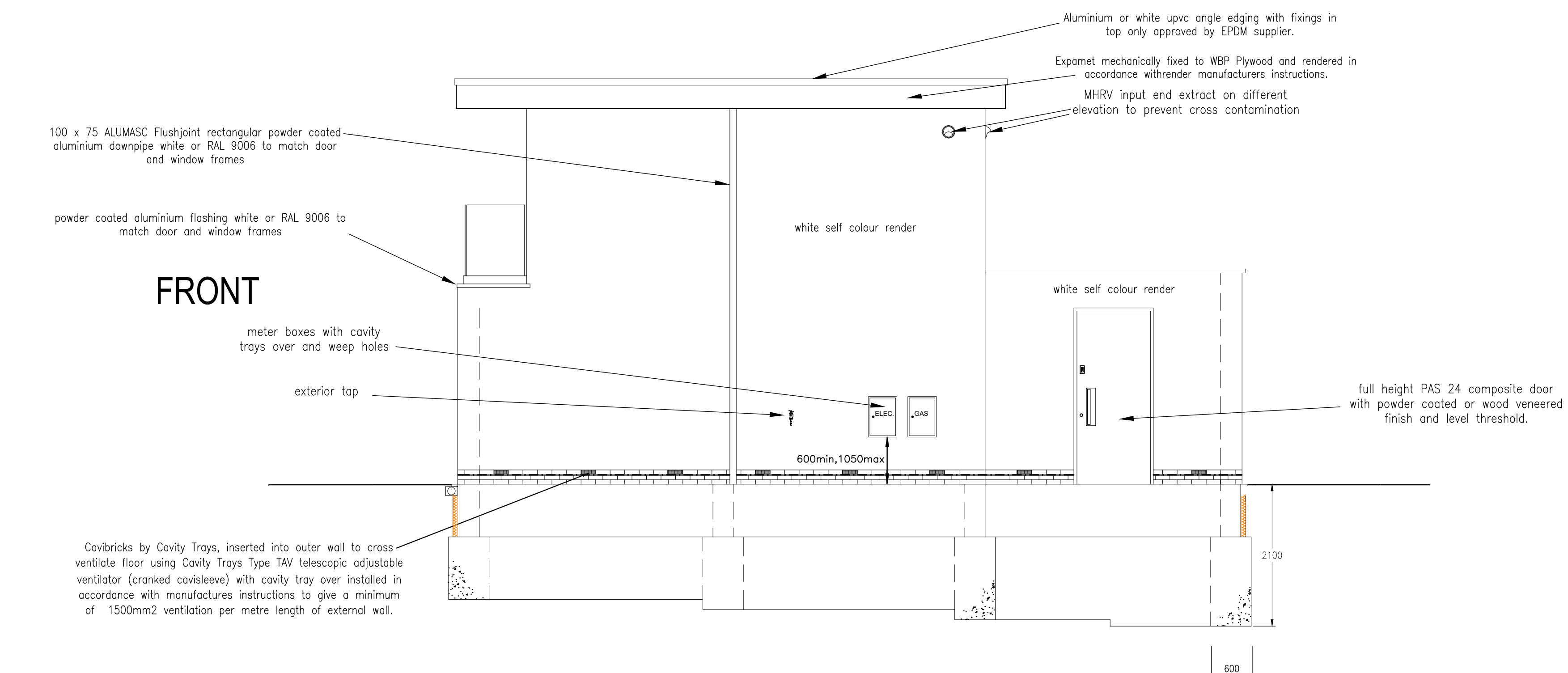


FRONT



side elevations

Stairs Closed tread construction with 2000mm min head clearance measured in accordance with Part K
 R= 216*mm
 G= 260
 2R+ G = 662

* subject to final measure on site
 Handrail between 900mm and 1100mm high measured from the pitch line of the stairs.

Flue : Rear entry factory made proprietary single walled metal flue certified to comply with relevant sections of BS 4543-1:1990 (1996), BS 4543-2:1990 (1996) and BS 4543-3:1990 (1996) (Part 1 withdrawn April 2000; partially superseded by BS EN 1859:2000) and installed on accordance with the relevant recommendations in BS 7566-1:1992(1998), BS 7566-2:1992(1998), BS 7566-3:1992(1998) and BS 7566-4:1992(1998). Insert inspection and cleaning openings as required to terminate a minimum of 1000mm above weather surface.

Alternatively install Isokern Pumice or equivalent proprietary modular chimney system in accordance with manufacturers instruction and current building regulations.

Hearth: Provide hearth (minimum 12mm thick) which has been independently certified that it cannot cause the temperature of the hearth to exceed 100 deg. or provide solid hearth, such as concrete or masonry, at least 125mm thick including the thickness of the non-combustible floor and or decorative surface, sample to be approved by client. All in accordance with Building Regulation Part J and appliance suppliers specification projecting a minimum of 150mm from the sides and 225mm at the front of the appliance although we would recommend a larger projection from the front to protect the floor from any material which might fall out of the appliance during loading or cleaning out.

Air Supply: Provide air supply for stove via a 100mm dia insulated duct fed directly from the outside through a Cavibrick by Cavity Trays in outer wall of chimney with free airflow of 7500mm/sq per brick with conversion piece (rectangular to round fitting, with cavity tray over). Provide air directly via fresh air box to stove in accordance with manufacturers specifications (closed combustion system).

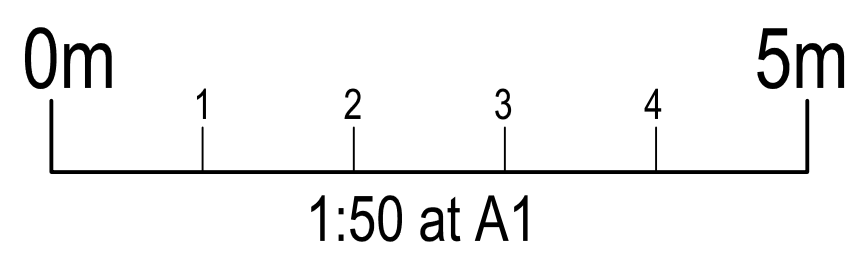
Roof Warm roof construction (no ventilation required) Metal web joists (Posi Joists or similar), design and calculations to be supplied by manufacturer allowing for snow loading and option of PV . supported on mild steel joist hanger manufactured to BS EN 10327 : 2004 . Fix firings to joists to fall to centre valley gutter min 1:80 with 18mm plyboard deck, fixed to every joist with 5mm dia. x 50mm long screws @ 500 crs (250 crs at both ends). Install vapour barrier (VCL) and protective layer as specified by Kingspan over deck before installing approximately 70mm* Kingspan OPTIM-R vacuum insulation with 25mm Kingspan Thermaroof TR27 over and finish with Classic Bond EPDM fully adhered with adhesive. All in accordance with manufacturers instructions.

* Final specification of insulation by Kingspan to confirm minimum 0.12W/m2K

Ceiling 3mm skim plastered 12.5mm pl/bd.

Parapet Dales Weatherstruck Meridian (or equiv.) Polyester Powder coated to BS 12206-1:2004, by Syntha Pulvin Approved and BS EN IOS 9002 registered applicators: Polyester Powder coating must be A2 s1, d0 limited combustibility (EN 13501-1: 2018 Classification of reaction to fire), colour to match render or door frames (tbc) and fitted in accordance with manufacturers instructions to BS 5642.

This drawing is copyright and should not be reproduced without permission. Do not scale from drawing for dimensions. If in doubt contact main contractor before proceeding.
 The contractor is responsible for checking all information before any orders are placed or construction commences.
 All drawings to be read in conjunction with structural engineers report, structural engineers report to take precedence over all other specifications.
 Main contractor responsible for site safety.



REV	DATE

PSK architect
New Build & Commercial Architect
 PSK CHELTENHAM LIMITED, Unit B4, Staverton Connection
 Gloucester Road, Cheltenham, GL51 0TF
 Tel: 01452 714 595 www.psk-architect.co.uk

TITLE

DESCRIPTION
Building Regulations Sheet 2

DATE	SCALE
22/05/2021	1/50 @A1
DRAWN	CHECKED
A. Davis	-----

DRAWING NO.
CF20-BAF-02